

# Announcing the Summit Renewable Natural Gas Program

## Building a Sustainable Energy Future



### Commitment to Reducing Carbon Emissions:

Summit Utilities Inc., the parent company of Summit Natural Gas of Maine Inc., is committed to strengthening the natural gas system's contributions to a sustainable energy future. Since coming to Maine six years ago, the company has put a strong focus on investing in energy efficiency and converting homes, small businesses and industrial customers from oil and propane to cleaner burning natural gas to reduce carbon emissions. The company's new Renewable Natural Gas Program is the next step in our ongoing efforts to support our local economy and fight climate change.

### What we have done: Reducing Emissions Through Conversions and Efficiency Investments

Since coming to Maine in 2013, Summit has invested more than \$340 million to make natural gas available to customers throughout the Kennebec Valley, Cumberland, Falmouth and Yarmouth. The company has also provided over \$3 million in energy efficiency rebates to convert residential, commercial and large industrial customers from oil to natural gas using high efficiency equipment. Through these investments, **Summit has reduced carbon emissions by an estimated 69,000 metric tons a year.** This is the carbon avoidance equivalent to taking nearly 15,000 cars off the road, according to the United States Environmental Protection Agency.

In Maine, more than 60 percent of homes heat with oil<sup>1</sup>, which generate 27 percent more carbon emissions than if they were heated with natural gas, according to the U.S. Energy Information Administration<sup>2</sup>. Adding efficient equipment can reduce emissions by an additional 11 percent according to data from Efficiency Maine.<sup>3</sup> **In total, that means the typical customer switching from oil and old equipment to natural gas and efficient equipment could reduce their carbon emissions by 38 percent.** This is a carbon avoidance equivalent to installing solar panels to meet the annual electric needs of two Maine homes<sup>4</sup>.

<sup>1</sup><https://www.eia.gov/state/data.php?sid=ME#ConsumptionExpenditures>

<sup>2</sup>[https://www.eia.gov/environment/emissions/co2\\_vol\\_mass.php](https://www.eia.gov/environment/emissions/co2_vol_mass.php)

<sup>3</sup><https://www.efficiencymaine.com/at-home/high-efficiency-boilers-furnaces/>

<sup>4</sup>Based on internal modeling derived from data from the U.S. Department of Energy and the U.S. Energy Information Administration.

### Where we are going: Renewable Natural Gas – The Next Step in Supporting a Sustainable Energy Future in Maine

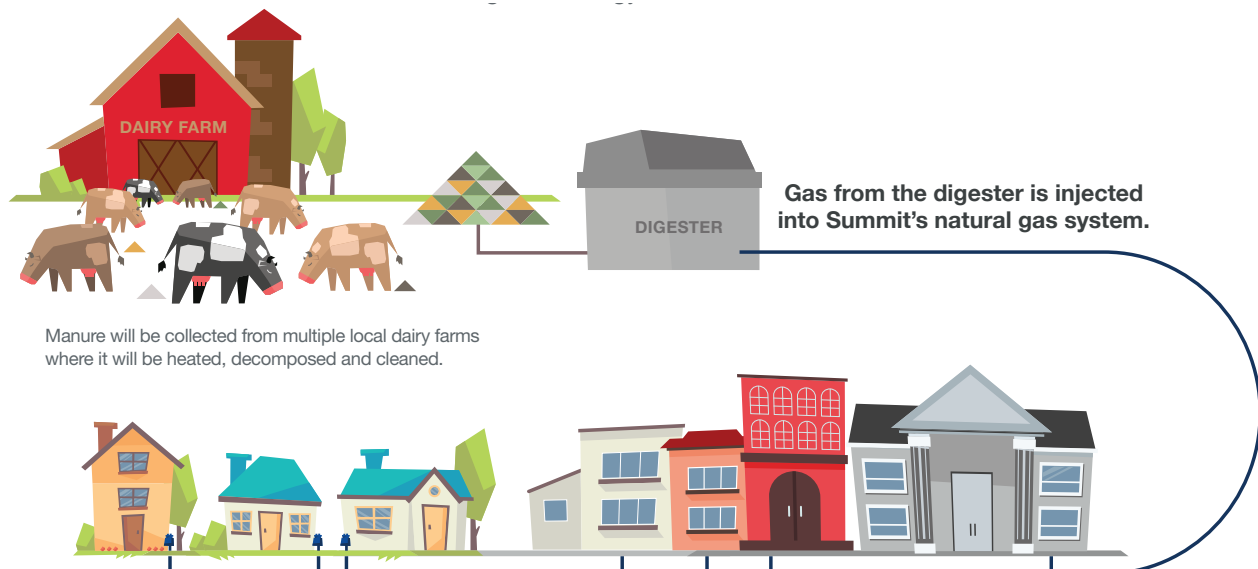
This year, Summit is introducing a three-part Renewable Natural Gas Program.

#### 1 – Investing in Home-Grown Renewable Natural Gas

Renewable Natural Gas (RNG), also known as biomethane, is derived from the decomposition of naturally occurring organic waste from landfills, waste treatment plants, industrial sites and on farms. Unless captured and converted into RNG, much of the emissions created from the organic waste at these facilities would be released into the atmosphere in the form of methane – one of the most potent greenhouse gasses.

Thanks to the state's rich history of dairy farming, Summit believes there is an opportunity to develop home-grown RNG right here in Maine. Manure is an untapped resource and Summit is eager to work with Maine farmers in converting it into clean, renewable energy.

This year, by partnering with Maine's dairy and agricultural communities, Summit plans to construct an anaerobic digestion facility in Central Maine. Located in the heart of Maine's dairy country, this facility will provide our customers with locally sourced natural gas to heat their homes, power their appliances and run their businesses.



By bringing together Maine's agricultural and energy sectors we can pave the way for home-grown energy.

#### **How it works:**

Summit is proposing to construct an anaerobic digestion facility in Clinton, known as Maine's dairy capital, because its five dairy farms make up 17 percent of the state's dairy production<sup>5</sup>. The proposed digester facility will receive dairy manure from family farms in Clinton and other areas in Maine. Once in the digester, the manure will be heated and decomposed, creating biogas. The gas will then be cleaned to remove impurities. Biomethane is nearly identical to traditional natural gas and can be used for heating, cooking and other processes. The renewable attributes from the digester will be sold to third parties to help them meet their emissions reduction goals.

Summit anticipates the digester will supply approximately 125,000 MMBtu of gas a year. For reference, that is about 45 percent of the company's annual residential gas demand in Maine.

Summit expects the digester will be commissioned and producing gas by the first quarter of 2021 pending approval and permitting from the proper regulatory bodies.

<sup>5</sup><https://dairystar.com/Content/News/Daily-News/Article/A-glance-at-Flood-Brothers-Farm/1/256/14516>

## **2 – Jumpstarting the Renewable Natural Gas Industry and Displacing Emissions Through Attributes**

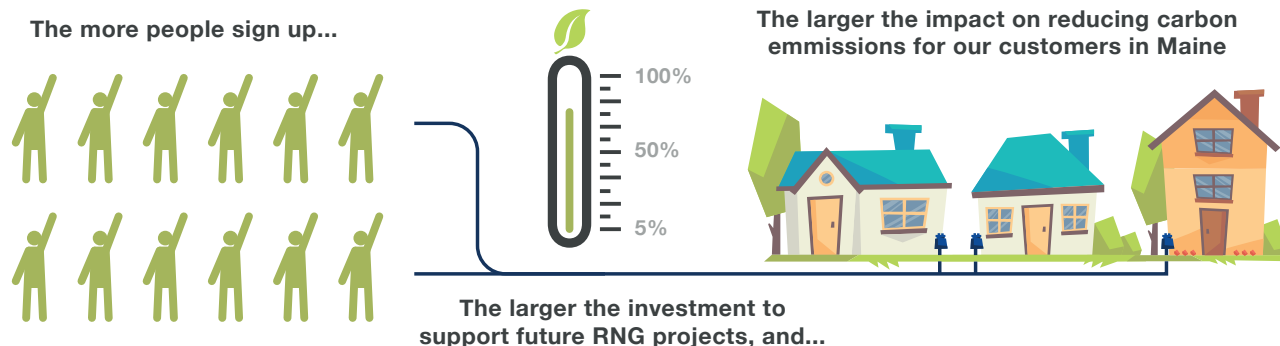
In addition to developing an RNG digester, Summit plans to match 5 percent of its Maine residential gas demand for the next year by purchasing renewable natural gas attributes (similar to carbon credits), all at **no cost to customers**.

By purchasing environmental attributes that come from the RNG that is produced at a landfill digester, Summit is deepening its commitment to a more sustainable energy future in Maine, and using its purchase to raise awareness and encourage other utilities and customers to support renewable natural gas.

*"Our renewable program is the next step in our ongoing efforts to reduce greenhouse gas emissions and invest in innovative new technologies that mitigate the impacts of climate change. It's simply the right thing to do for our customers, our business and our children," said Kurt Adams, Summit's President.*

## **3- Giving Customers a Renewable Choice**

At Summit we want our customers to have the opportunity to participate in our renewable program, which is why, in addition to matching 5 percent of our residential gas demand with RNG attributes, Summit is launching a voluntary renewable program for our customers. This program will allow Maine customers to help fund the purchase of additional RNG attributes to further reduce their carbon footprint.



Customers enrolling in the program may elect to match 10 to 100 percent of their average annual usage with RNG attributes as an additional fee on their bill. The RNG attributes will be added and shown on enrolled customers' bill based on the percentage selection made at time of sign-up. The adder will be a flat monthly fee based upon the RNG attribute price. More details of the program will be made available once approved. Please call 1.800.909.7642 or visit us at [summitnaturalgasmaine.com](http://summitnaturalgasmaine.com) about signing up.

# Announcing Summit's Renewable Natural Gas Program

How You and Summit Can Build a Sustainable Energy Future

Summit is committed to building a sustainable energy future. By converting customers from oil and propane to natural gas and investing millions in energy efficiency rebates, Summit has reduced carbon emissions by an estimated 69,000 metric tons a year in Maine. That's equivalent to taking nearly 15,000 cars off the road. By adding renewable natural gas attributes to our portfolio, we're taking the next big step!

**Want to join Summit's commitment to a cleaner Maine?** By calling Summit to convert to natural gas you could reduce your home's carbon emissions by up to 38%.



**Step 1:** Converting from heating oil to natural gas can reduce your home's carbon emissions by 27%.



Upgrading your old heating equipment can reduce your home's carbon emissions by another 11%. That's an overall carbon emissions reduction of 38%, which is equivalent to installing solar panels on two Maine homes to meet their annual electric needs!

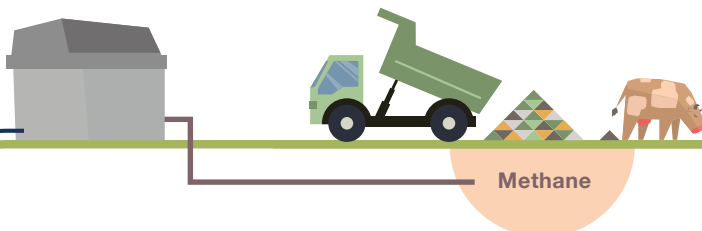


## Summit is taking that a step further!

This year, Summit is launching a Renewable Natural Gas Program by matching 5% of our residential gas demand with renewable natural gas attributes, at **no cost to customers!** In the near future, customers will be able to help fund more attributes on a voluntary basis. This is all part of our effort to provide choice and environmental benefits to our customers.



**What is Renewable natural gas (RNG)?** Renewable Natural Gas (RNG), also known as biomethane, is derived from naturally occurring agricultural, animal, and human waste. Unless captured and converted into RNG, much of the emissions from this waste would be released into the atmosphere in the form of methane – one of the most potent greenhouse gasses.



Call Summit Natural Gas today at **(800) 909-7642** to learn more about converting to natural gas!

